

System Solutions



**Reliability You Need - From The Company You Trust.**

Trust the Scantrol family of high precision data collection tools, with their proven OMR and image capture features, to meet your data management needs. The iNSIGHT 4ES optical mark recognition (OMR) and image scanner is one of the most versatile and efficient desktop scanners available for automated data collection.

The scanner's powerful processor delivers fast document throughput and provides a complete solution with a variety of off-the-shelf and custom software packages.

**The Power of Multiple Data Collection Capabilities**

The iNSIGHT 4ES offers you all the robust capabilities of optical mark recognition (OMR) technology—plus a wealth of expanded functions through image capture. The iNSIGHT 4ES scanner accurately scans an OMR form for written pencil and pen marks (such as bubbles, check marks, tick marks) and bar codes, giving you the most precise and effective data available.

This scanner also adds the power and flexibility of image capture. The iNSIGHT 4ES captures both full page images or image clips of text areas or text boxes, such as essay responses on a test or comment fields on a survey. This dynamic scanner can meet all your data collection needs today and in the future.



## Accurate, Fast and Efficient

The iNSIGHT 4ES scanner is accurate, fast and efficient. It has a form throughput rate of up to 2,800 sheets-per-hour and a fixed, automatic feed hopper that holds 100 sheets and helps eliminate continual form reloading and constant operator attention.

Using continuous self diagnostics, the iNSIGHT 4ES alerts you when it detects conditions that may affect data accuracy. The scanner's sheet thickness detector helps ensure the scanner reads only one sheet at a time and the sheet-skew detection helps ensure proper registration while scanning.

The iNSIGHT 4ES is energy efficient and reduces power consumption when not in use. The iNSIGHT 4ES is ENERGY STAR® certified.

## Easy To Operate

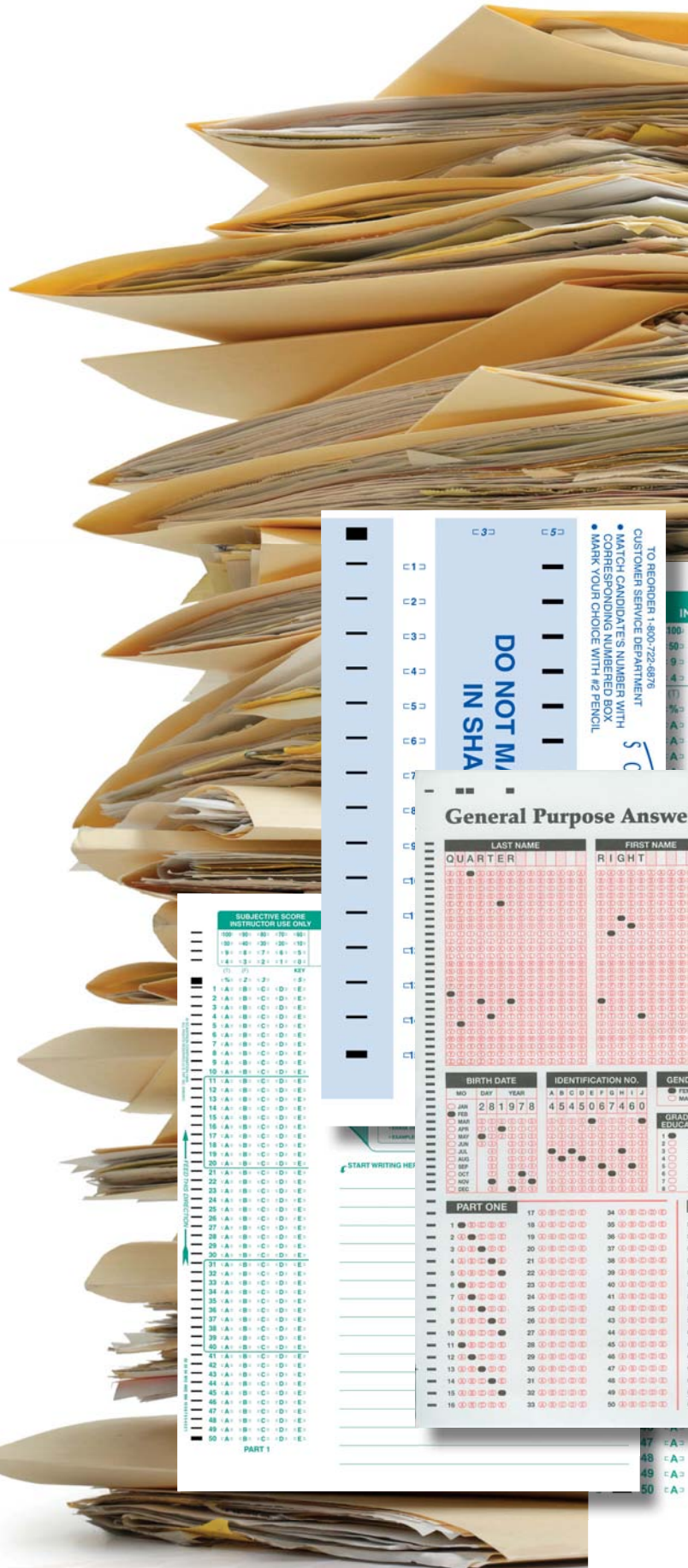
The iNSIGHT 4ES scanner is easy to operate and reads both pencil and pen marks from an OMR form, giving you the most precise and effective data available. Messages are provided on a forty-character display to simplify operation. An open feed path provides sheet visibility at all times as well as easy access for sheet removal and transport cleaning. The scanner self-diagnostics quickly pinpoint any operating problems.

Software applications developed for the iNSIGHT 2/3/4/4U and legacy ScanMark ES Series scanners are plug-and-play compatible with the iNSIGHT 4ES scanner.

## Providing Multiple Data Collection Capabilities

Combining OMR and image capture technology, iNSIGHT 4ES scanners:

- Read traditional OMR “bubble” marks.
- Capture image clips of text areas or text boxes, such as essay responses on a test or comment fields on a survey.
- Capture full page images.
- Capture and convert written information into digital information with intelligent character recognition (ICR) technology – such as name, address, and identification number.
- Read both pen and pencil forms.
- Read checkbox responses, X box responses, and bar codes.
- Are compatible with many existing imaging applications using the included TWAIN driver.





## Eliminate Extra Steps

The iNSIGHT 4ES is designed to lighten your workload, enabling you to:

- Easily process tests and surveys that incorporate a variety of response formats, including OMR bubbles, checkboxes, and essay answers – all with a single pass through the scanner.
- Readily share documents online with colleagues – such as tests to be graded by a group of teachers. This powerful feature eliminates the cumbersome task of photocopying, distributing, and collecting paper copies.
- Create electronic archives for a paperless “paper trail”—a convenient and reliable alternative to paper records that can degrade over time.
- Simplify the process for users in providing demographic information—with intelligent character recognition (ICR) technology that converts hand-print to electronic text.

## Customer Application

### Testing and Training

- Tests and learning assessment
- Instructor, performance, and course evaluations
- Enrollment and tracking
- Employee in-services
- Student profiles, documentation, and forms

### Research and Evaluation

- Survey and questionnaire data collection
- Product research
- Program evaluations
- Competitive data collection
- Enrollment and applications

### Human Resources

- Payroll/time sheets
- Benefit enrollments
- Applicant tracking
- Employee change of status
- Employee surveys
- 360-Degree surveys

### Healthcare

- Patient encounter forms
- Patient satisfaction surveys
- Medical histories and patient forms
- Patient, needs and risk assessments
- Nurse staffing reports
- Continuing education evaluations

## Options

- Programmable interactive printer(s) that print information on the sheet being scanned based on the scanned data.  
The printer(s) can print error codes, alphanumeric messages, serial numbers, validation flags, and test scores with no effect on the throughput rate.
- Bar code reader - reads bar codes in ladder format.
- SelfScore option allows operation without connection to a host computer with test scoring, survey, and ballot capabilities
- Select Stacker allows separate stacking of sheets based on criteria selected in your scanning software.
- Optional RealTime Character Recognition utilizing NestorReader™ software allows processing of machine and hand print data.



## Technical Specifications

<b>Physical Description</b>	Length: 21.25" Width: 14.5" Height: 9" Weight: 17 lbs
<b>Environment</b>	Operating Temperature: 60° to 85°F (16°C to 29°C) Humidity: 40% to 60%, non-condensating
<b>Power</b>	100-240 volt operation: 100-240 volts AC (-10%, +6%); 50-60 Hz; US 3-prong plug; 15 amp dedicated circuit
<b>Communications</b>	USB 2.0 connection—Image or OMR processing
<b>Operation</b>	<ul style="list-style-type: none"><li>• Dual Read Heads: 200 dots per inch (dpi) resolution, up to 256 levels of grayscale per pixel; pencil and ink read capabilities</li><li>• Pencil or ink forms may be used</li><li>• Scanning Rate: 2,800 sheets per hour in OMR mode, 2,300 sheets per hour in OMR with imaging mode.</li><li>• Forms: 2.5" x 5" to 9" x 14" (60-100 lb. Offset). Uses both Mark Reflex B and Trans-Optic® forms</li><li>• Form Input Capacity: Auto-feed, 100 sheets</li><li>• Output Stacker Capacity: 100 sheets main stacker, 100 sheets select stacker (if present)</li><li>• Controls: Two Push button programmable switches</li><li>• Message Display: 40 character, alphanumeric</li><li>• Multi-feed detection</li><li>• Integrated ES/ScanMark™ Emulation Mode</li></ul>
<b>Options</b>	<ul style="list-style-type: none"><li>• A programmable interactive printer</li><li>• Select stacker separates forms that fail edit checks</li><li>• Bar code reader</li><li>• SelfScore® option for classroom test scoring and surveys</li></ul>

*Product information subject to change without notice.*

Please visit us at [www.scantron.com](http://www.scantron.com) for a complete overview of iNSIGHT system requirements or call us at **1-800-SCANTRON** for more information.

© 2011 Scantron Corporation. All rights reserved. Scantron and the Scantron logo are registered trademarks. P/N 277-351-003  
Class 1 LED product. This class is eye-safe under all operating conditions.



SCANTRON®