



The Evolution Continues

The iNSIGHT™ 30 from Scantron is an industry exclusive: a desktop model scanner combining high-quality, high-speed, full-color Document Imaging technology with the proven Data Collection capabilities and accuracy of Optical Mark Recognition (OMR). In developing this innovative technology, Scantron has applied over 50 years of engineering, forms design, applications development and customer support experience to ensure our customer's success.

Whenever you need the speed and accuracy of OMR along with the productivity and flexibility of Document Imaging, the iNSIGHT 30 is the right solution for you. The advanced technology offers genuine versatility at a lower cost of ownership than owning separate hardware. Due to its unique blend of capabilities, the iNSIGHT 30 is well positioned to address demanding applications such as testing, surveys, attendance, grading, student portfolios, personnel records, archival, and general back file conversions.



Data Collection

Data Collection is the process of reading marks from a printed form (e.g. tests, surveys, ballots, etc.) and converting it to ASCII data. The *i*NSIGHT 30 accurately scans the form for data while our Scantools Plus™ software controls the scanning process and stores the data that is read. The scanner and software work together reading up to 3600 sheets per hour.

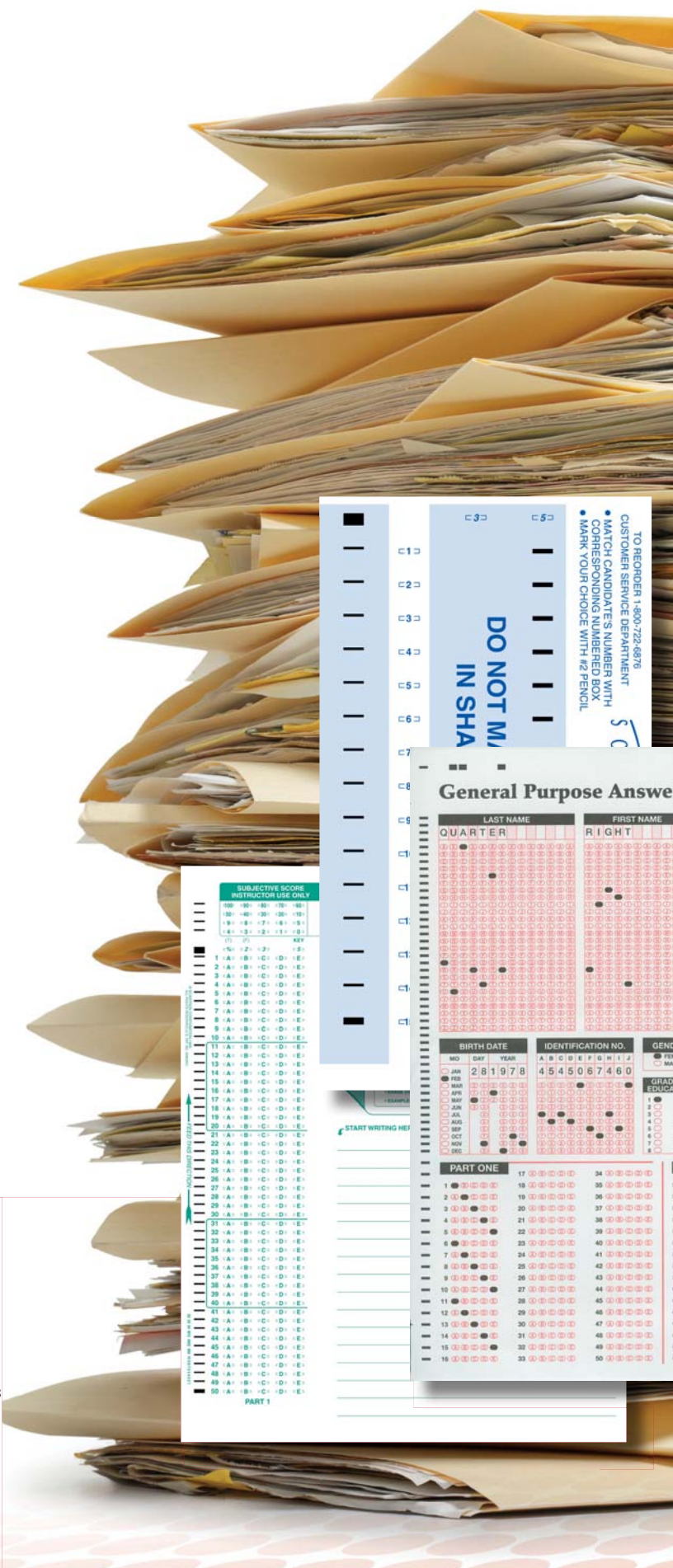
The *i*NSIGHT 30 scanner can read written marks (such as bubbles, check marks, tick marks) and bar codes. It can also scan grayscale images for digital storage and, with the addition of NestorReader software (available separately), it can read machine print and handprint using RealTime Character Recognition.

Accuracy You Have Come to Expect



Data Collection Features

- Includes Scantools Plus and ScanFlex data collection software, assuring accurate resolution, recognition, data formatting and the flexibility to scan forms you may have printed locally on plain paper
- Integrates sixteen level mark discrimination technology to ensure correct data capture results
- Provides 8-bit, 256 grayscale levels and 200 dpi images
- Allows you to capture, name and archive image clips (TIFF, JPEG)
- Software recognizes bar codes
- Processes machine and hand print data with the optional RealTime Character Recognition utilizing NestorReader software
- Reads both pen and pencil forms
- Maintains software compatibility with existing ScanTools applications



TO REORDER 1-800-722-6976
CUSTOMER SERVICE DEPARTMENT
• MATCH CANDIDATE'S NUMBER WITH
CORRESPONDING NUMBERED BOX
• MARK YOUR CHOICE WITH #2 PENCIL

DO NOT MARK IN SHA

General Purpose Answer Sheet

LAST NAME			FIRST NAME																																														
1	2	3	4	5	6	7	8	9	10	11	12	13	14	15	16	17	18	19	20	21	22	23	24	25	26	27	28	29	30	31	32	33	34	35	36	37	38	39	40	41	42	43	44	45	46	47	48	49	50

SUBJECTIVE SCORE
INSTRUCTOR USE ONLY

100	90	80	70	60	50	40	30	20	10	0																																							
1	2	3	4	5	6	7	8	9	10	11	12	13	14	15	16	17	18	19	20	21	22	23	24	25	26	27	28	29	30	31	32	33	34	35	36	37	38	39	40	41	42	43	44	45	46	47	48	49	50

BIRTH DATE
MO DAY YEAR
2 8 1 9 7 8

IDENTIFICATION NO.
A B C D E F G H I J K L M N O P Q R S T U V W X Y Z
4 5 4 5 0 6 7 4 6 0

PART ONE

1	2	3	4	5	6	7	8	9	10	11	12	13	14	15	16	17	18	19	20	21	22	23	24	25	26	27	28	29	30	31	32	33	34	35	36	37	38	39	40	41	42	43	44	45	46	47	48	49	50
1	2	3	4	5	6	7	8	9	10	11	12	13	14	15	16	17	18	19	20	21	22	23	24	25	26	27	28	29	30	31	32	33	34	35	36	37	38	39	40	41	42	43	44	45	46	47	48	49	50

START WRITING HERE



Document Imaging

Document Imaging is the process of scanning paper documents and converting them to digital images. We know that the documents you work with aren't always the perfect size, shape or quality for scanning. That is what makes the iNSIGHT 30 perfect for your scanning needs.

It can effortlessly handle everything from small card stock to long print-outs and, in a single batch, transport sheets of multiple sizes and thickness. After scanning, with one-click you can select the format of the scanned image, the resolution, the file type, and the destination of the resulting file using the Click&Scan software.

Exceptional Productivity Document Imaging Features

- Includes Click&Scan software which offers one-click functionality to send documents to file, email, printers, fax printers and desktop applications
- Scans documents up to 863 mm (34 in.) long and thicknesses ranging from onionskin to card stock
- Utilizes TWAIN Driver (included)
- Output resolutions from 75 to 1200 dpi
- Scans at speeds up to 75 ppm
- Simultaneous black & white and color/grayscale image output
- Save files in TIFF, JPEG, RTF and PDF formats
- Optional post-scan document imprinter prints audit information directly on the document with no speed degradation
- Supported by Scantron's extensive services organization to ensure maximum uptime and customer satisfaction

SUBJECTIVE SCORE INSTRUCTOR USE ONLY

100	90	80	70	60
50	40	30	20	10
9	8	7	6	5
4	3	2	1	0

(T) (F) KEY
 =% =2 =3 =5
 1 =A =B =C =D =E
 2 =A =B =C =D =E
 3 =A =B =C =D =E

PART 1

IMPORT

DO NOT MARK OR WRITE IN SHADDED AREA

FRONT

FRONT

TO REORDER CALL 1-800-722-6976
 TSM FORMS DEPARTMENT

TEST RECORD

PART 1	
PART 2	
TOTAL	

47 =A =B =C =D =E
 48 =A =B =C =D =E
 49 =A =B =C =D =E
 50 =A =B =C =D =E

General Specifications

Scanning Technology	Dual CCD/Grayscale output bit depth is 256 levels (8-bit). Color capture bit depth is 48 bits (16 x 3); color output bit depth is 24 bits (8 x 3).
Optical Resolution	600 dpi
Multi-feed Detection	With ultrasonic technology
Connectivity	USB 2.0
Bundled Software	TWAIN Drivers; Click & Scan; ScanTools Plus
Electrical Requirements	100-240 V (International); 50/60 Hz; universal power supply included
Power Consumption	Sleep Mode < 4 Watts; Running: < 60 Watts
Environmental Factors	Energy Star qualified scanner; Operating temperature: 15-35° C (59-95° F); Operating humidity: 15-76 percent relative humidity
Acoustical Noise (operator position sound pressure level)	Standby mode: <32 dB(A); Operating mode: <65 dB(A)
Physical Description	26" x 24" x 14" operational, 13" x 24" x 14" storage foot print. Weight: 23 lbs (10.4 kg)
Recommended PC Configuration	For documents up to 14 in. (356 mm) long at 400 dpi: Pentium® processor, 2 GHz 32-bit (x86) or 64-bit (x64) minimum, 2 GB RAM, 40 GB hard drive with minimum 20GB available hard disk space. For optimal performance when using a PC running the Windows 7 operating system, at least 3 GB RAM is recommended. For longer documents/higher resolutions: Pentium® processor, 2 GHz 32-bit (x86) or 64-bit (x64) minimum, 4 GB RAM, 40 GB hard drive with minimum 20 GB available hard disk space. Monitor should be 1024 x 768 or higher resolution.
Supported Operating Systems	Windows 7, 32-bit and 64-bit Editions. Windows Vista® Business Edition or greater, 32-bit Edition only SP1 or greater. Windows® XP Professional SP3 or greater. All Windows hot fixes for the service pack must also be installed.

Data Collection Specification

Throughput	Up to 3600 Sheets per hour
Read Heads	200 dots per inch (DPI) resolution, up to 256 levels of grayscale per pixel; pencil and ink read capabilities
Forms	2.5" x 5.5" to 9" x 14" (60-100 lb. Offset), Uses both Mark Reflex and Trans-Optic forms; Pencil and ink forms may be used.
Feeder Capacity	90 sheets, 90 g/m ² (24 lb bond, 60 lb Offset)
Spacing's supported	.166, .166 48 cell, .200 inline, .200 offset, .200 line read, and .300 line read
Barcode	Standard - Software read through ScanTools
Bundled Software	ScanTools Plus

Document Imaging Specifications

Throughput (200 dpi, landscape, letter size, black and white/grayscale/color)	Up to 75 page per minute / 150 images per minute
Image output	Black and white, grayscale (8 bit), color (24 bit)
Output resolution	75, 100, 150, 200, 240, 300, 400, 600 and 1200 dpi
Maximum document size	297 mm x 863 mm (11.7 in. x 34 in.)
Minimum document size	64 mm x 89 mm (2.5 in. x 3.5 in.)
Imprinter	Post-scan document imprinter (Ink cartridge carrier and ink cartridge sold separately)
Paper Thickness and Weight	34-413 g/m ² 9-110 lb.) paper
Feeder Capacity	Up to 150 sheets of 60 g/m ² (16 lb.) paper
Bundled Software	TWAIN driver, Click & Scan
File Format Outputs	Single and multi-page TIFF, JPEG, RTE, PDF

Please visit us at www.scantron.com for a complete overview of INSIGHT system requirements or call us at 1-800-SCANTRON for more information.